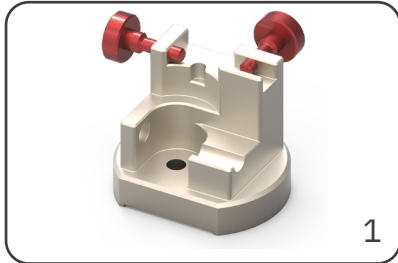


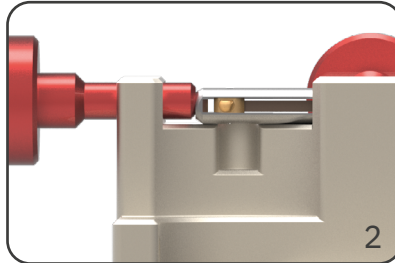
# COFA

## BLADE CHANGE COFA 4M/5M

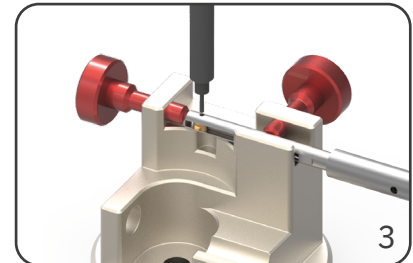


Assembly device for tool types COFA 4M and 5M.

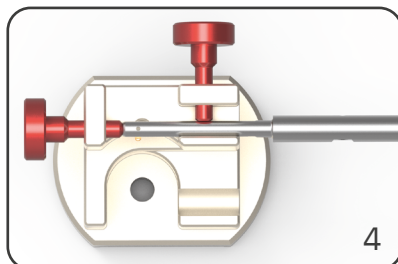
Please refer to page 44 for order information.



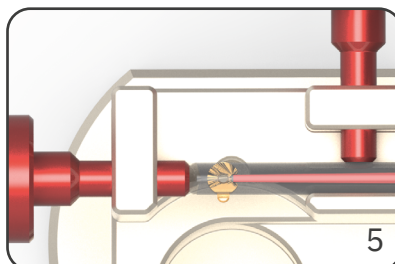
Adjust the tool lengthwise so that the blade bore is above the recess for the split pin. Clamp the tool as shown.



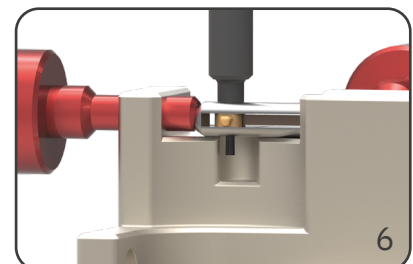
Push the split pin carefully out of the bore. Make sure you apply the assembly pin to the split end of the pin. If necessary, use a small hammer.



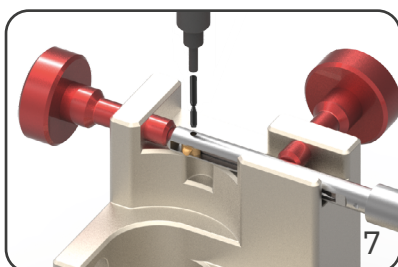
Push out the blade by means of the long end of the assembly pin.



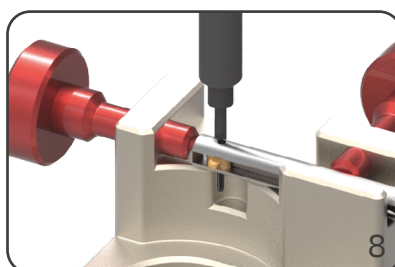
Insert the new blade into the tool with the blade groove orientated towards the spring. Please observe the marks on the tool body.



Guide the assembly pin with its long end through the bore and center the blade.



Insert the split pin manually with the split end upwards. Then push it with the assembly pin.



The assembly pin must be level with both sides of the tool body.