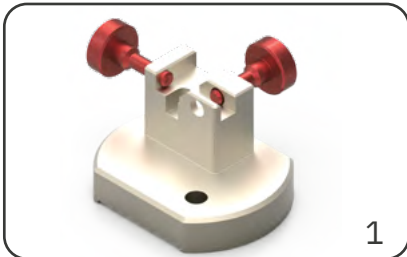


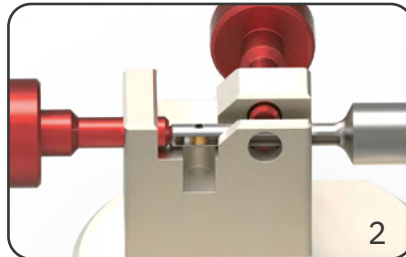
# COFA

## BLADE CHANGE COFA C2/C3

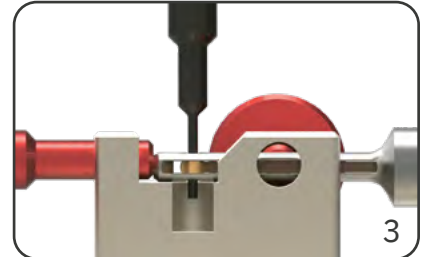


Assembly device for tool type  
COFA C2 / C3

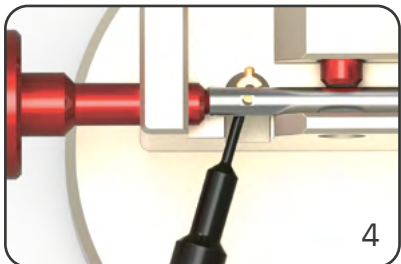
Please refer to page 44 for order  
information.



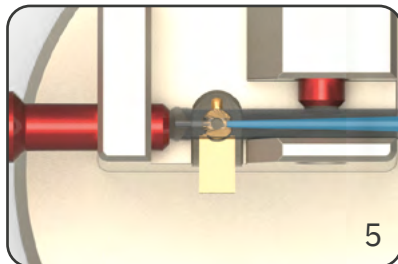
Adjust the tool lengthwise so that  
the blade bore is above the recess  
for the roll pin. Then clamp the  
tool. Make sure that the larger  
spring recess in the shaft is on  
clamp screw side.



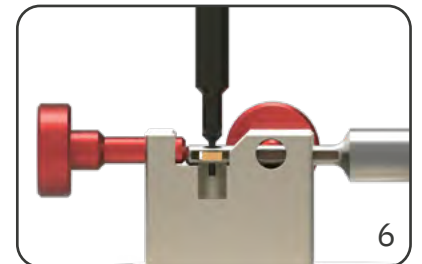
Push the roll pin out of the tool by  
using the smaller diameter of the  
assembly pin.



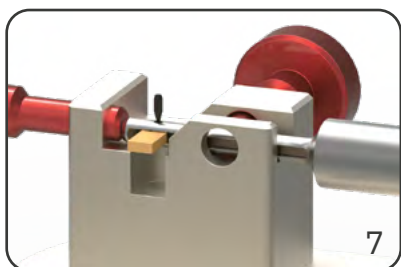
Push out the blade by using the  
smaller diameter of the assembly  
pin.



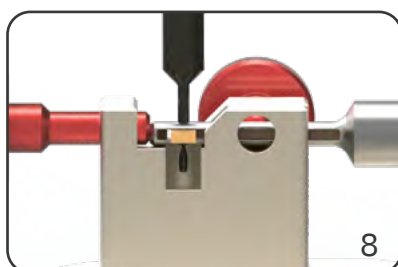
Insert the new blade nose first.  
The nose must be on the side of  
the shaft where the larger spring  
recess is (observe the mark on  
the tool). The spring must engage  
with the groove of the blade.



Center the blade with the help of  
the assembly pin. Its smaller  
diameter serves for pre-  
centering.



Insert roll pin with its longer and  
thinner section first.



Use assembly pin to push roll pin  
level with blade. Then  
unclamp the tool.



Brake off the assembly aid  
extensions of the blade and from  
the roll pin manually.